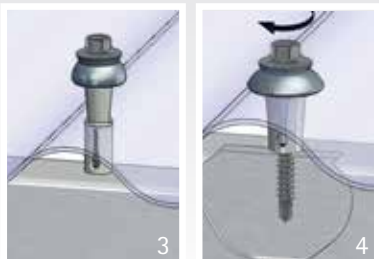
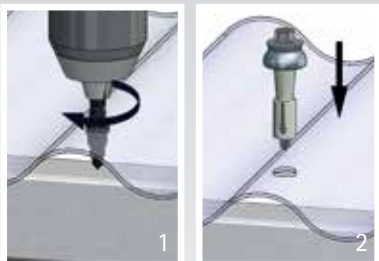
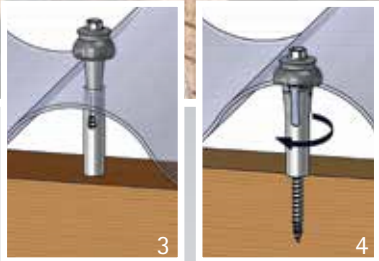
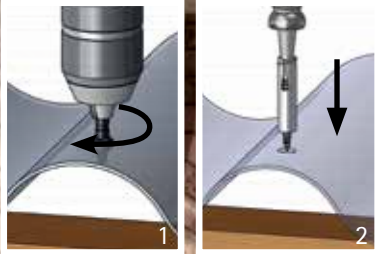


**PATENTED
SLEEVE**



REISSER

Distance set

stainless steel A2 screw +
EPDM sealing + sleeve

For fastening corrugated and trapezoidal light panels

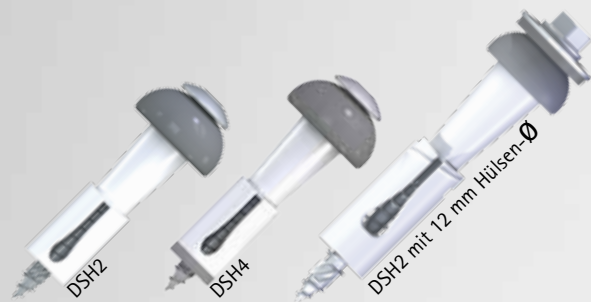
- One man installation
- 50% time saving
- Significantly improved tightness
- Best corrosion protection

REISSER
SCHRAUBENTECHNIK



REISSER distance set

For fastening corrugated and trapezoidal light panels onto wood substructure



- For light panels with thickness 1-2 mm
- No pre-drilling of the substructure
- Glass fiber reinforced expanding sleeve
- Stainless steel A2 facade panel screw 4,8 x 50 // stainless steel A2 DRIBO® screw 6,0 x L E19
- EPDM umbrella sealing Ø 19 mm // Ø 24 mm
- Drive SIT®20/TX 20 // A/F8 (DSH2-12 wood)



Designation	Profile height mm	Panel thickness mm	Sleeve D Ø mm	Screw d Ø mm	Screw length L mm	Item No.	Pack
DSH2-Wood	17-20	1-2	10	4,8	50	4005674 61501 3 00DSH2V138-0480502-1	100
DSH4-Wood*	21-24	1-2	10	4,8	50	4005674 70268 3 00DSH4V138-0480502-1	100
DSH2-Wood	29-33	1-2	12	6,0	75	4005674 68779 9 00DSH2V138-1200302-1	100
DSH2-Wood	34-38	1-2	12	6,0	90	4005674 69441 4 00DSH2V138-1200352-1	100
DSH2-Wood	39-43	1-2	12	6,0	90	4005674 69443 8 00DSH2V138-1200402-1	100
DSH2-Wood	44-48	1-2	12	6,0	100	4005674 69446 9 00DSH2V138-1200452-1	100
DSH2-Wood	49-53	1-2	12	6,0	100	4005674 67805 6 00DSH2V138-1200502-1	100

*Please note the delivery time!



- DSH5 for light panels with thickness 3 mm
- No pre-drilling of the substructure
- Glass fiber reinforced expanding sleeve
- Stainless steel A2 facade panel screw 4,8 x 50
- EPDM umbrella sealing Ø 19 mm
- Drive SIT®20/TX 20



Designation	Profile height mm	Panel thickness mm	Sleeve D Ø mm	Screw d Ø mm	Screw length L mm	Item No.	Pack
DSH5-Wood	17-20	max. 3	10	4,8	50	4005674 70272 0 00DSH5V138-0480502-1	100



Pre-drilling of the profile with REISSER step drill (Item No. 00A423S010-410040L-2)



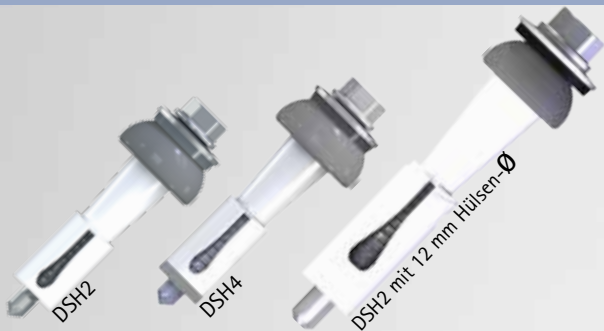
Ø 10 mm

Technical information:

- For panels with more than 2 mm material thickness we recommend:
 - wood substructure: RP-r-6,0 x 90 E16 + appropriate saddle washer
- Please pay attention to the regulations of the manufacturers

REISSER distance set

For fastening corrugated and trapezoidal light panels onto steel substructure



- For light panels with thickness 1-2 mm
- No pre-drilling of the substructure
- Glass fiber reinforced expanding sleeve
- Bimetal self-drilling screw RP-K-5,5 x 50 E16 for steel substructure up to 5,25 mm // Bimetal self-drilling screw RP-K-6,3 x L E19 for steel substructure up to 6,0 mm
- EPDM umbrella sealing Ø 19 mm // Ø 24 mm
- Drive SIT®20/TX 20 // A/F3/8 (DSH2-12 steel)



Designation	Profile height mm	Panel thickness mm	Sleeve D Ø mm	Screw d Ø mm	Screw length L mm	Item No.	Pack
DSH2-Steel	17-20	1-2	10	5,5	50	4005674 604536 00DSH2B197-0550502-1	100
DSH4-Steel*	21-24	1-2	10	5,5	50	4005674 70266 9 00DSH4B197-0550502-1	100
DSH2-Steel	29-33	1-2	12	6,3	70	4005674 69424 7 00DSH2B197-1200302-1	100
DSH2-Steel	34-38	1-2	12	6,3	85	4005674 69426 1 00DSH2B197-1200352-1	100
DSH2-Steel	39-43	1-2	12	6,3	85	4005674 69428 5 00DSH2B197-1200402-1	100
DSH2-Steel	44-48	1-2	12	6,3	85	4005674 69431 5 00DSH2B197-1200452-1	100
DSH2-Steel	49-53	1-2	12	6,3	85	4005674 67807 0 00DSH2B197-1200502-1	100

*Please note the delivery time!



- DSH5 for light panels with thickness 3 mm
- No pre-drilling of the substructure
- Glass fiber reinforced expanding sleeve
- Bimetal self-drilling screw RP-K-5,5 x 50 E16 for steel substructure up to 5,25 mm
- EPDM umbrella sealing Ø 19 mm
- Drive A/F 8



Designation	Profile height mm	Panel thickness mm	Sleeve D Ø mm	Screw d Ø mm	Screw length L mm	Item No.	Pack
DSH5-Steel	17-20	max. 3	10	5,5	50	4005674 70270 6 00DSH5B197-0550502-1	100



Pre-drilling of the profile with REISSER step drill (Item No. 00A423S010-512040L-2)

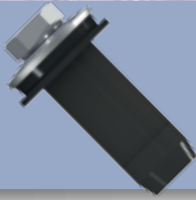


Ø 12 mm

Technical information:

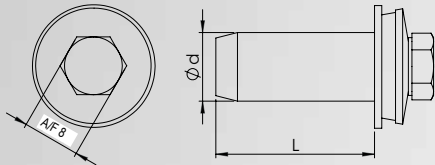
- For panels with more than 2 mm material thickness we recommend:
 - steel substructure: RP-K-6,3 x 85 E16 + appropriate saddle washer
- Please pay attention to the regulations of the manufacturers

Please also think about the flexible butt joint with
REISSER FixFlex.



REISSER FixFlex

EPDM-sealing sleeve + stainless steel A2 screw + sealing washer



Stretching fastener for plate joints of different materials

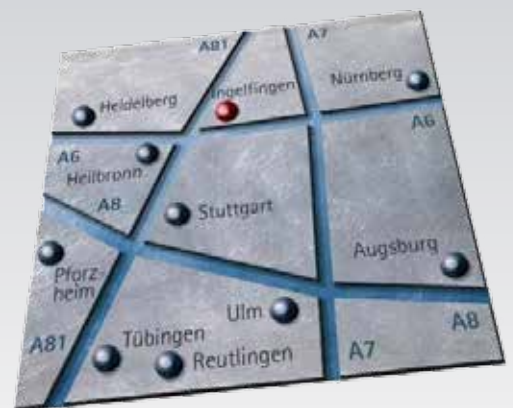
- Quick, easy assembly completely from the top
- 50% time saving
- For flexible butt joint of plastic profiles with metal profiles
- Sealing drill holes up to $\text{Ø } 10 \text{ mm}$
- Permanently tight
- Long service life



For more than 90 years REISSER-Schraubentechnik GmbH has been your partner in the different fields of the fastening technology.

With our manufacturer know-how we supply customers of industry and trade all over the world. We develop and produce screws for applications in the field of roof, wall, solar and industrial lightweight constructions as well as plastic connections, timber applications and different industrial sectors.

Today REISSER is one of the leading stainless steel screw manufacturers in Europe. The company profile is rounded off with the own „REISSER Galvanik“ Electroplating, which provides first-class Galvano design and quality.



REISSER-Schraubentechnik GmbH
Fritz-Müller-Str. 10 • D-74653 Ingelfingen-Criesbach
Fon: +49 7940/127-160 • Fax: +49 7940/127-123
produktion@reisser-screws.com • www.reisser-screws.com

