

REISSER FixFlex

EPDM sealing sleeve + screw stainless steel A2 + sealing washer

Stretching fastener for plate joints of different materials

- quick, easy assembly completely from the top
- for flexible butt joint of plastic profiles with metal profiles
- for sealing drill holes
- permanently tight
- long service life



For the connection of the light records themselves we recommend our patented distance set for the One-man-mounting.

REISSER-Schraubentechnik GmbH
Fritz-Müller-Str. 10 • D-74653 Ingelfingen-Criesbach
Fon: +49 7940/127-160 • Fax: +49 7940/127-123

produktion@reisser-screws.com • www.reisser-screws.com

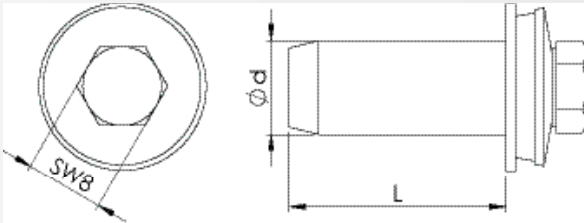
REISSER
SCHRAUBENTECHNIK





REISSER FixFlex stainless steel A2/EPDM sealing sleeve FixFlex

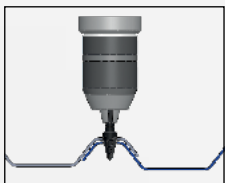
stretching fastener for plate joints of different materials



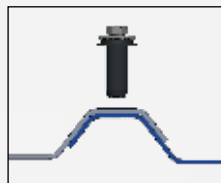
- EPDM sealing sleeve with screw stainless steel A2 and sealing washer
- quick, easy assembly completely from the top
- 50% time saving
- for flexible butt joint of plastic profiles with metal profiles
- for sealing drill holes
- permanently tight
- e.g. fastening of translucent sheets onto roof and wall

designation	sleeve Ø d mm	sleeve length L mm	screw Ø mm	washer Ø mm	pre- drilling Ø mm	clamping range mm	item no.	pack
FixFlex	9,5	16	M5	15	10	0,4 - 5,0	00FLEXV038-1000162-1	100
	9,5	22	M5	15	10	5,0 - 16,0	00FLEXV038-1000222-1	100

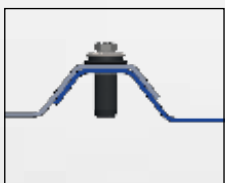
application:



1. pre-drilling of the plates with step drill* up to Ø 10 mm, 800 - 1000 rpm



2. Insert the FixFlex into the drill hole



3. tighten with width across flats 8



4. tighten till the sealing sleeve is lightly compressed

*pre-drilling of the profiles with step drill
(item no. A423 S 011 410 040 L)

