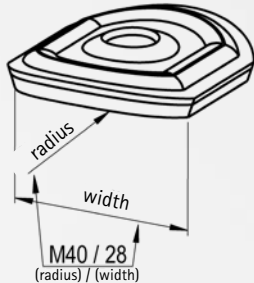


REISSER mini saddle washer

aluminium/EPDM



- Aluminium 1 mm with EPDM sealing 2 mm
- Hole diameter 6,5 mm, saddle washer length 32 mm
- For top chord installation
- Use as a drilling template and simplifies positioning
- Stabilizes the profile, avoids pressing in of the top chord
- No accumulation of dirt due to curvature

Designation	Radius mm	Width mm	EAN Item No. self-coloured	Pack
M40/28	40	28	4005674 69551 0 00745MA011-040028P2-1	100

Perfect fastening with mini saddle washer



1. Putting on as drilling template



2. Screwing in through the hole in the mini saddle washer



3. Tighten till the sealing is lightly compressed



4. Perfect and stable fit

Please note:

Also available: lacquered in RAL.

Self-drilling screws

Facade screws

Distance-Set // FixFlex // FPS

Saddle washers

Solar

Accessories

Tools

GTC